

Luxxor® LXC Camera HD Color Video Camera

Replacement for SONY™ XC-505, XC-505, XC-777, XC-999



Overview

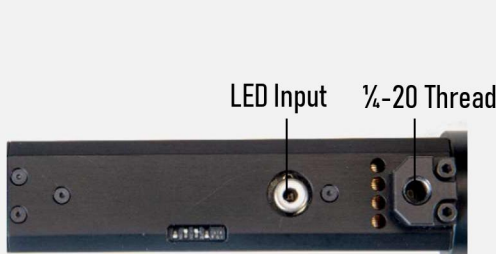
The LXC HD Video Camera offers big performance in slender compact package. The HD color camera module is made for a wide variety of applications such as medical endoscopy, industrial borescope and microscope applications and machine vision. The SONY™ IMX273 1/2.9", 1.58 megapixel Color CMOS sensor produces super image quality images with amazing detail, and the camera offers both USB3 and HDMI video outputs. The LXC accepts C-mount lenses and C-mount endoscope and borescope couplers. The familiar design makes it a convenient replacement for the Sony XC-505, SONY XC-555, SONY XC-777, and SONY XC-999 models. In addition, the camera has integrated Image Capture Software and optional LED Illumination.

Specifications

Image Sensor	1/2.9" Sony IMX273 Color CMOS, 1.58mp with IMX6 Image Processor
Effective Pixels	1440 x 1080
Frame Rate	30fps
Video Output	USB3 and HDMI
Lens Mount	C-Mount
AGC	Auto or Manual
Shutter	Global shutter with variable

LED	Integrated Bright LED light source with automatic exposure control
Software	Video Toolbox (Image and Video Capture, crosshair/grid overlay, digital zoom)
Operating Temp	0 – 40 deg C (32 to 104 F)
Storage Temp	-30 to +60 deg C (-22 to +140 F)
Dimensions	25mm x 28mm x 110mm (without video coupler lens)
Mount	1/4-20 Tripod Thread

™ Sony product names and logos are trademarks of Sony Global.

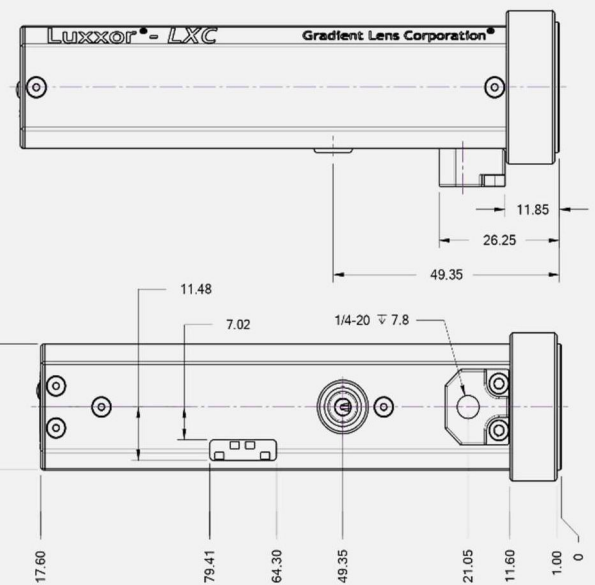
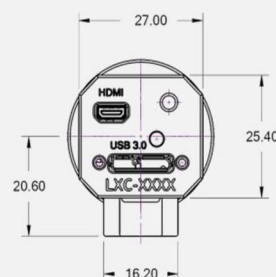
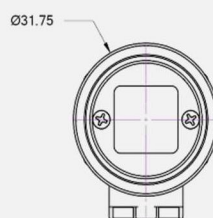


Switches



HDMI

USB3/Power



Configuration Switches



There are four configuration switches located on the bottom of the LXC Camera. The factory default setting for the switches 1 to 4 is Down, UP, UP, DOWN shown here.

Switch 1:

Up = HDMI Video

Down = USB3 Video

Switch 2:

Up = LED and shutter speed auto exposure

Down = Shutter speed only auto exposure

Switch 3:

Up = Normal auto exposure setpoint

Down = Lower auto exposure setpoint

Switch 4:

Up = Fixed integration speed (shutter speed)

Down = Auto exposure on

Accessories

Video Couplers for Borescope Eyepiece

VC-20: 20mm (Non Focusable)

VC-25: 25mm (Non Focusable)

VC-35: 35mm (Non Focusable)

VC-50: 50mm (Non Focusable)

VC-75: 75mm (Non Focusable)

HVA2: Focusable C-Mount Coupler



LED Light Source to ACMI Post

LXC-LED: Bright LED Light Source



USB3 Cable

LXC-USBCABLE

HDMI Cable

LXC-HDMICABLE

LXC Power Supply

LXC-PWR-SUPPLY

Software

The LXC Camera includes Zarbeco™ Video Toolbox Pro Software.

Software Features:

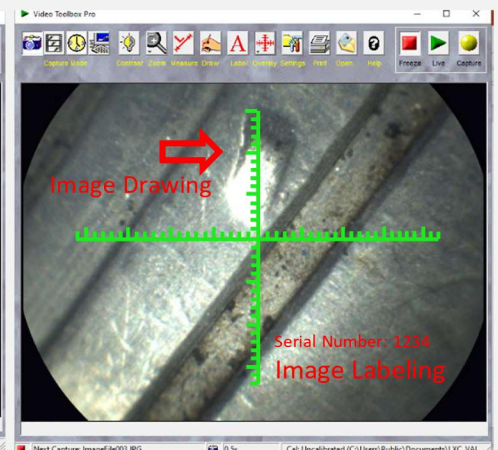
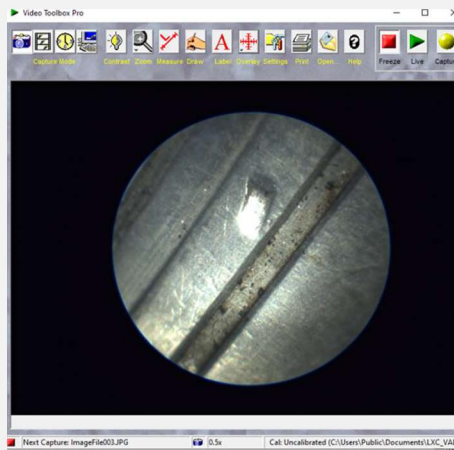
Image and Video Capture

Digital Zoom

Image Labeling

Crosshair/Grid Overlay

Image Drawing



Warranty

Gradient Lens Corporation warrants the Luxxor® LXC camera and LXCLED light source to be free of defects in material and workmanship and to perform in accordance with the manufacturer's specifications when subject to normal use and service for a period of one year from the date of purchase. Gradient Lens Corporation will either repair or replace components found to be defective or at variance from the manufacturer's specifications within this time frame at no cost to the customer. It shall be the purchaser's responsibility to return the instrument to the authorized service center.

This warranty does not cover breakage or failure due to tampering, misuse, neglect, accidents, improper installation, modification, shipping, or to improper maintenance, service and cleaning procedures. This warranty is also void if the instrument is not used in accordance with the manufacturer's recommendations, or if required service is performed by anyone other than a Gradient Lens Corporation authorized agent. No other express or implied warranty is given.