



Luxxor
LEC
User's Manual



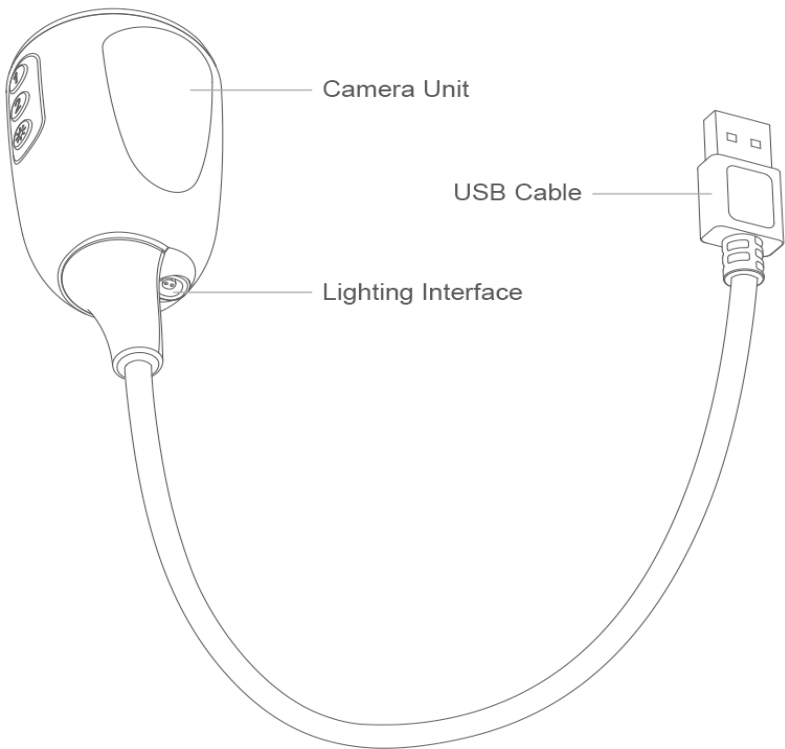
Gradient Lens Corporation®

Getting Started with the LEC

The Luxxor® *LEC* can display images on a computer running Windows.

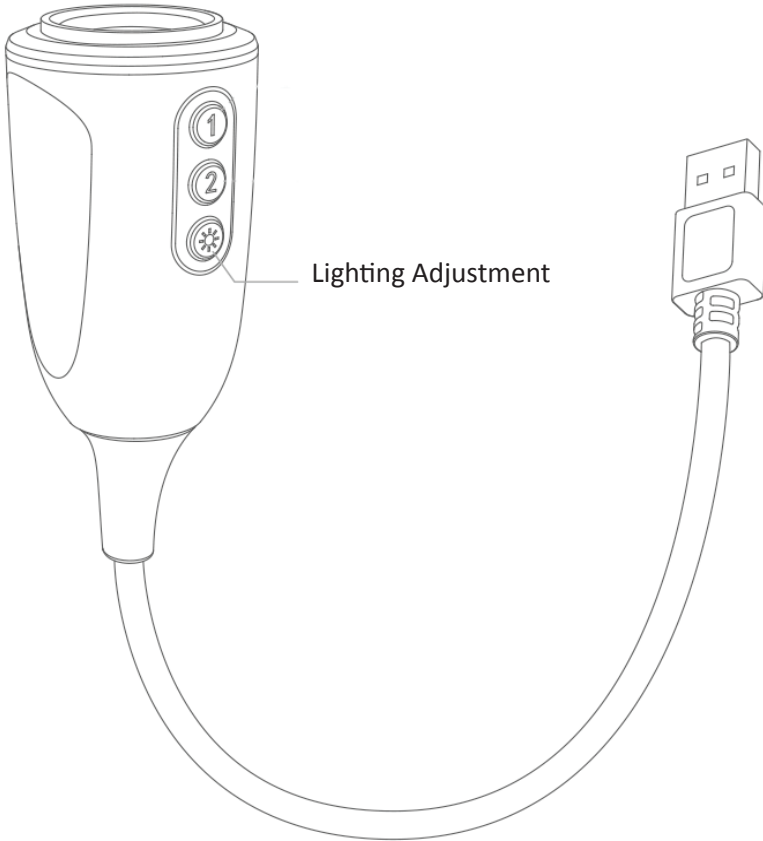
Connections

The Luxxor® *LEC* has two connectors on its end – one for Lighting and one for USB.



Attach the LED Light

Connect the LED light to the Lighting Interface and the Borescope.
Plug the USB Cable into the computer.



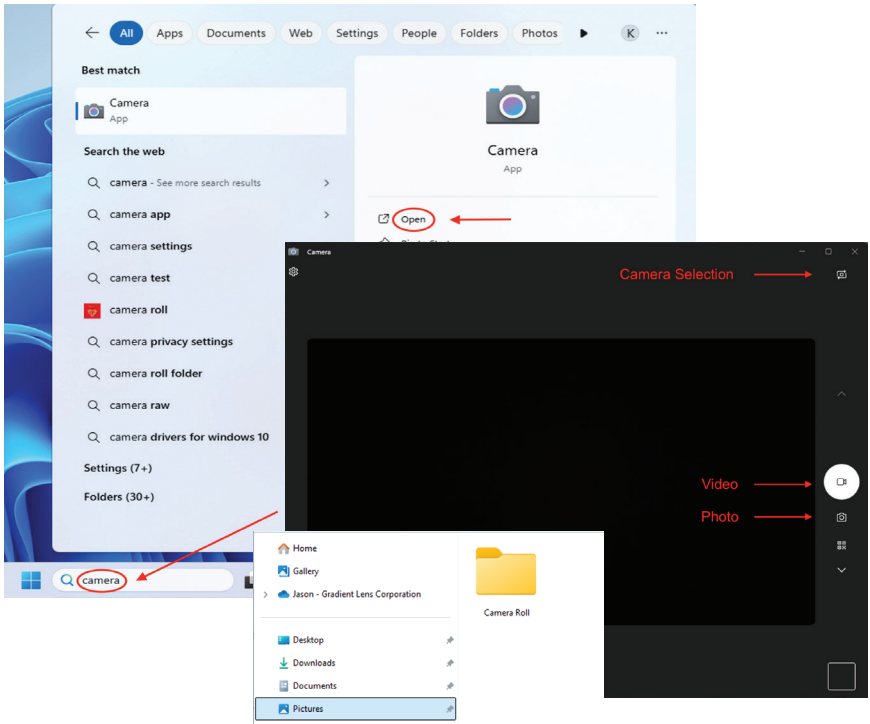
Button Functions

Button **1** and Button **2** have no functionality when using the Windows Camera App.

The **Lighting Adjustment** button toggles the light through 5 intensity settings.

Viewing images on a Windows computer

The Luxxor® *LEC* camera works with the native Windows Camera app. Connect the Luxxor® *LEC* camera using the USB cable and open the Camera app. Select the Luxxor® *LEC* (HDUSB) using the camera selection button in the upper right corner of the camera app. Capture images and videos by clicking the Video or Photo button in the Camera app. Photos and videos will be stored in the Pictures/Camera Roll folder.



Connecting a Borescope

To connect the Luxxor® *LEC* camera to your borescope, pull back the grooved ring on the video coupler and insert the borescope's eyecup into the coupler lens as far as it will go. Then release the grooved ring.



Sales and Technical Support

Gradient Lens Corporation

207 Tremont Street
Rochester, NY 14608
Phone: 585-235-2620

Gradient Lens Corporation West

4647 Jackson Lane, Unit D
Phelan, CA 92371
Phone: 585-235-2620

hawkeyeborescopes.com
info@gradientlens.com
Toll Free: 800-536-0790

Service

To obtain service for a *Luxxor*® LEC Video Camera, please contact your reseller or Gradient Lens Corporation directly. If the problem cannot be corrected over the phone, a Return Materials Authorization number (RMA) will be issued along with instructions for shipment to an authorized service center.

Warranty

Gradient Lens Corporation warrants that all *Luxxor*® Cameras and accessories will be free of defects in materials and workmanship for one year from the date of first retail purchase. Video and lighting products have manufacturer's warranties for one year. This warranty does not cover breakage or failure due to tampering, misuse, neglect, accidents, improper installation, modification, shipping, or to improper maintenance, service, and cleaning procedures. This warranty is also void if the instrument is not used in accordance with the manufacturer recommendations or if required service is performed by anyone other than a Gradient Lens Corporation authorized agent. **NO OTHER EXPRESS OR IMPLIED WARRANTY IS GIVEN.**

This device complies with part 15 of the FCC Rules. Operation is subject to the following two conditions: (1) This device may not cause harmful interference, and (2) this device must accept any interference received, including interference that may cause undesired operation.

The logo for Gradient Lens Corporation features a yellow, curved swoosh that arches over the company name. The text "Gradient Lens Corporation" is written in a bold, black, sans-serif font, with a registered trademark symbol (®) at the end.

Gradient Lens Corporation[®]

207 Tremont Street
Rochester, NY 14608 USA

hawkeyeborescopes.com
info@gradientlens.com
585.235.2620 800.536.0790

v1.1